

Precision meets Motion



Manual

Swivel head

Adjustable by up to +/- 115° with collet chuck holder and support

EWS
Tool Technologies

Swivel head

Manual

1. Description of the tool head

The swivel head is designed as a monoblock. The driven tool, complete with the O-ring at the end of the shaft, but be introduced into the revolver head and aligned using the adjustment bar on the back.

Gears: The gear shafts are mounted in preloaded spindle bearings of P4 quality. The bevel gears are spiral-toothed and adjusted to the lowest possible circumferential backlash with optimum contact ratio.

Spindle bearings and gears are lubricated for life. Relubrication is not necessary where driven tool heads are used as normal.

2. Adjustment of the work spindle

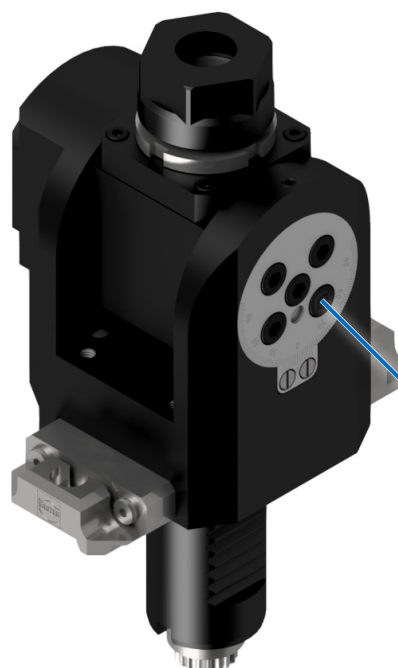
The work spindle is mounted in a swivelling spindle carrier and can be swivelled by up to +/- 115°.

For loosening, there is a threaded ring in the centre of the swivel on the front of the housing which can be clamped or loosened with 5 hexagon socket screws. After loosening these grub screws, the work spindle is brought into the spindle position on a presetting device or similar and then the screws are tightened again crosswise.

3. Mounting the cutting tool

The collet with the cutting tool must be inserted into the nut before assembly into the driven tool. Only then may the clamping nut, including collet, be tightened in the tool cone.

Whenever working on the work spindle, the holes behind the clamping nut must be counter-held. Failure to do so can cause considerable damage.



Hexagon socket screws

depending on swivel head type
4 or 5 screws (SW4)

The grub screw with SW 2.5 must not
be loosened under any circumstances



EWS Tool Technologies

EWS Weigle GmbH & Co. KG
Maybachstraße 1 · D-73066 Uhingen
Telefon +49(0)7161-93040-100
Telefax +49(0)7161-93040-30
E-Mail: info@ews-tools.de
www.ews-tools.de

WSW Tooling Systems

WSW Spannwerkzeuge-Vertriebs GmbH
Maybachstr. 1 · D-73066 Uhingen
Telefon +49(0)7161-93040-100
Telefax +49(0)7161-93040-30
E-Mail: info@wsw-collets.de
www.wsw-collets.de

COMMAND TOOLING SYSTEMS

Command Tooling Systems
13931 Sunfish Lake Blvd NW
Ramsey · MN 55303 USA
Telefon +1-763-576-6910
Telefax +1-763-576-6911
support@commandtool.com
www.commandtool.com

EWS Korea

EWS Korea Co. Ltd.
60-11 · Woongnam-Dong
Changwon
Kyoung-Nam Korea
Telefon +82 55-267-8085
Telefax +82 55-262-3118
E-Mail: info@ewskorea.co.kr
www.ewskorea.co.kr

EWS Russia

EWS Ltd.
Krassnaja str., 38
600015 Vladimir
Russland
Telefon +7-4922-541160
Telefax +7-4922-541160
E-Mail: info@ews-russland.ru
www.ews-russland.ru

EWS 易德斯 Turrets & Tool holders

JIANGSU EWS MACHINE CO.,LTD
37 hao xizhangzhenbeilu
fenghuangzhen zhangjiangang
China
Tel: +86-512-5842-9991
Fax: +86-512-5842-9990
yujo@ewskorea.co.kr

EWS Tool Technologies

埃维斯刀座技术(太仓)

**EWS Tool Holder Technologies
(Taicang) Co. Ltd**
Beijing East Road No. 88
215400 Taicang · Jiangsu
P. R. China
Telefon +86 512 3306 2600
Telefax +86 512 3306 2601
E-Mail: sales.cnews-tools.de
www.ews-tools.cn

TOOL ARENA GO CONNECTING COMPANIES

Tool-Arena GmbH
Maybachstraße 1 · D-73066 Uhingen
Telefon +49(0)7161-93040-100
E-Mail: info@tool-arena.com
www.tool-arena.com